

RFC Editor Reporting June 2008

1. Monthly Summary

The following numbers represent the June 2008 statistics for documents moving through the RFC Editor queue.

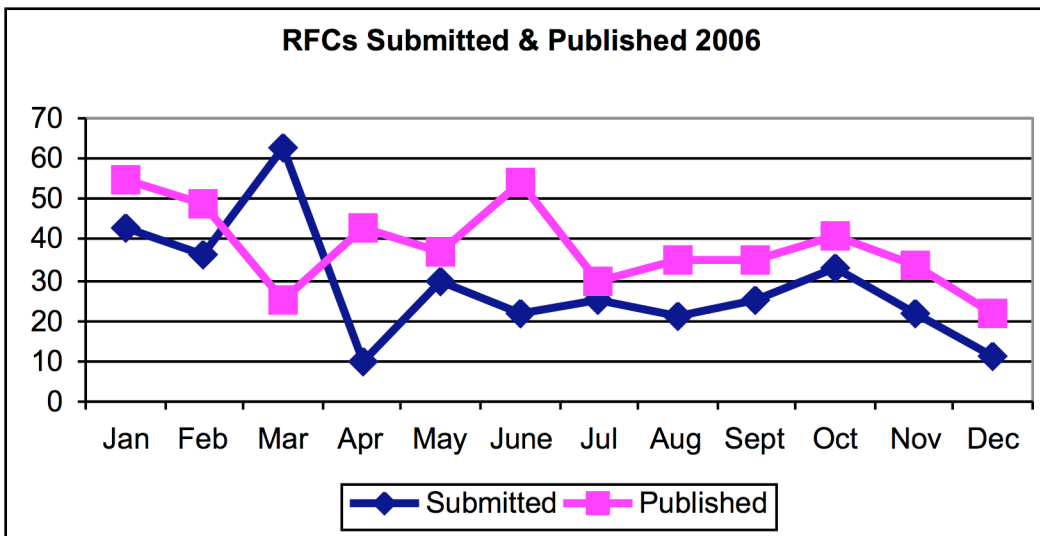
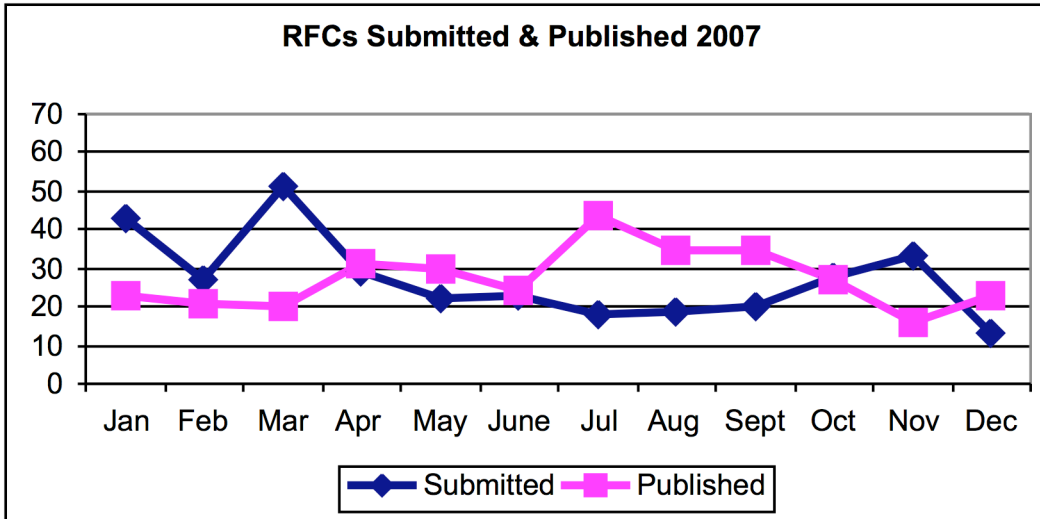
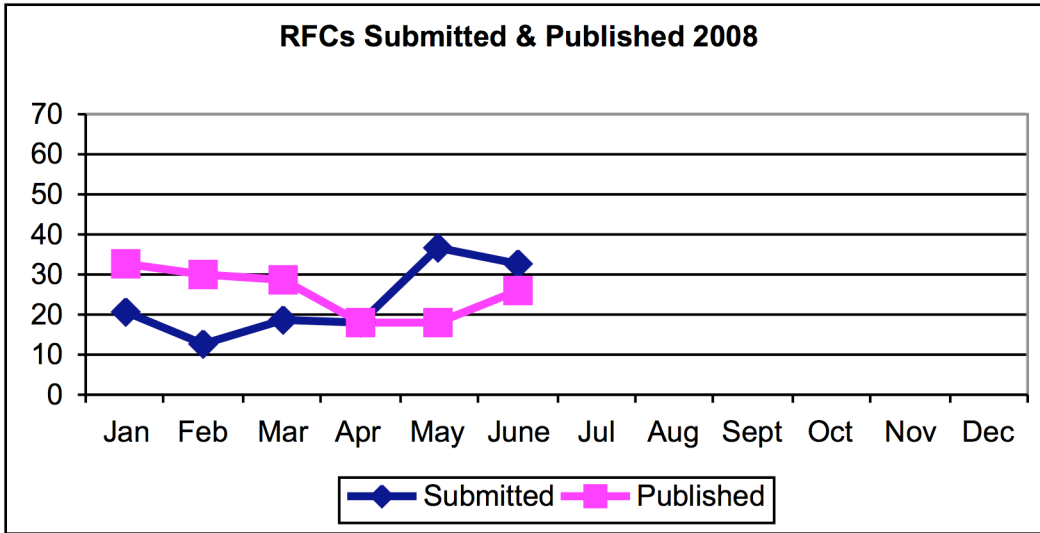
Submitted	33
Published	26
Withdrawn/DNP	2

Number of Documents in Queue per State at EOM

EDIT	15
RFC-EDITOR	10
AUTH48	20
REF	2
IANA	1
AUTH	2
TO	4
MISSREF	44

2. Annual Submission and Publication Rates

The following graphs show the submission and publication rates for RFCs. The first three show the submission and publication rates over the last 3 years. During this time, the RFC Editor has worked down the size of the queue, and the total amount of time a document spends in the queue. In 2006 and 2007, there were large (50+) submission bursts in March, in which it took the RFC Editor 3-4 months to recover and return to equilibrium. In 2008, we did not experience a burst in March, which explains the steady decrease in time that an internet-draft spends in the publication queue. However, the submission rate increased recently.



3. Queue Processing Times

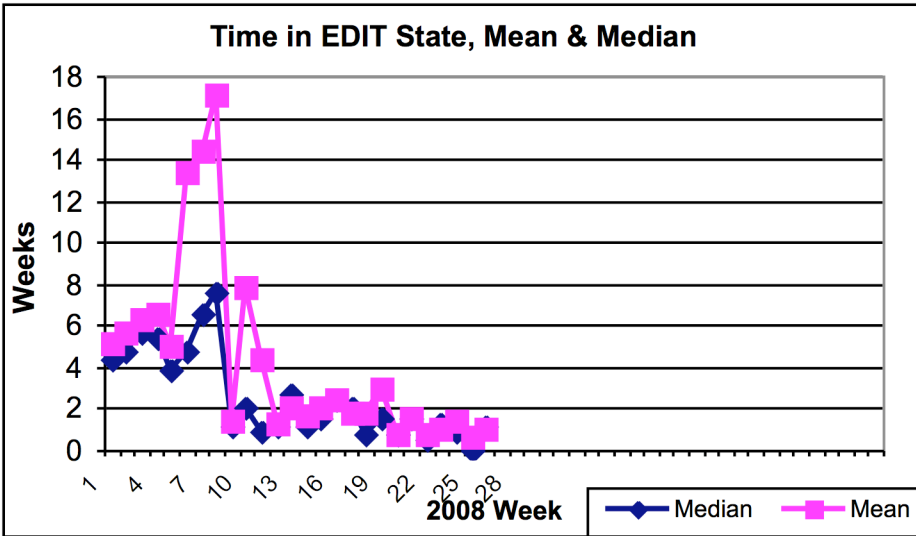
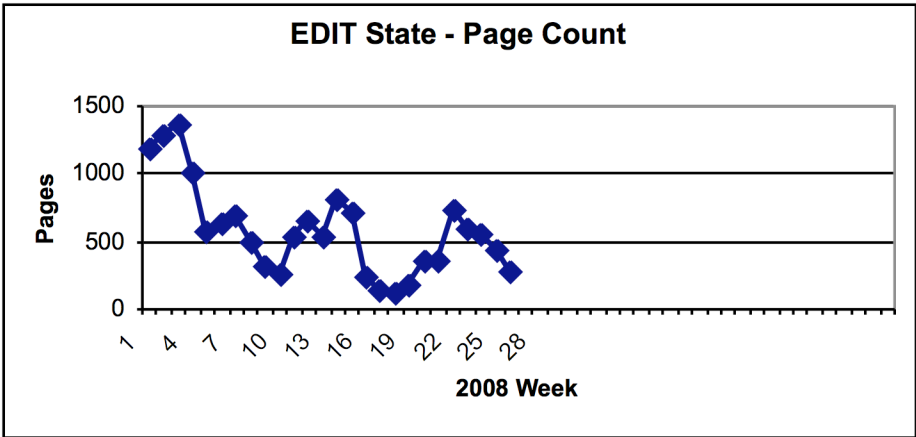
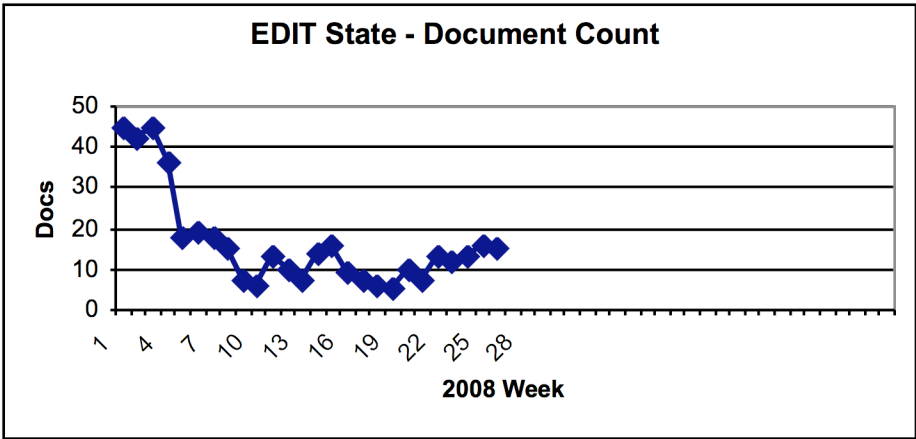
The subsequent figures show the processing times of documents as they move through the RFC Editor queue. The diagrams show document counts, page counts, and average times in queue per state (EDIT, RFC-EDITOR, & AUTH48).

Note that there is a ripple effect, as spikes in document and page counts may be due to sets of documents moving through the queue together. The set does not move to the next state until the entire set is ready to be moved. For example, in April 2008, there were 3 sets of documents being worked on (imapext - 4 docs, pkix - 4 docs, mip4 - 3 docs). This shows up as a spike in the EDIT state around week 18-19. There is then a subsequent spike in the RFC-EDITOR state around week 20, which results in a spike in the AUTH48 state around week 22.

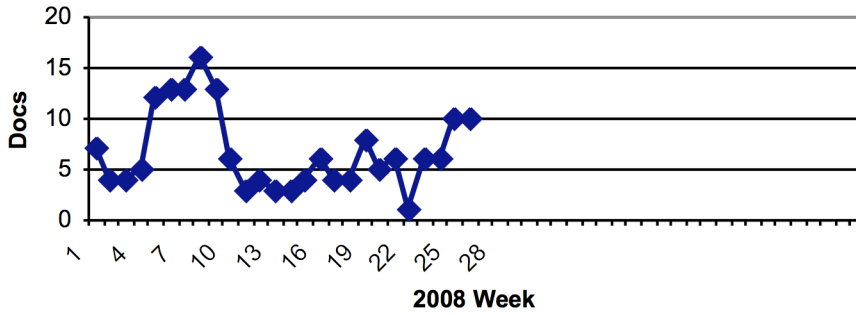
Generally speaking, the more documents there are in the queue, the longer it takes for documents to move through the queue.

Note 1: The data for the page counts used to create the graphs on the following pages was recalculated, as the automated reports sent to the IESG/IAB and as shown at <http://www.rfc-editor.org/CurrQstats.txt> were incorrect for January and February of 2008.

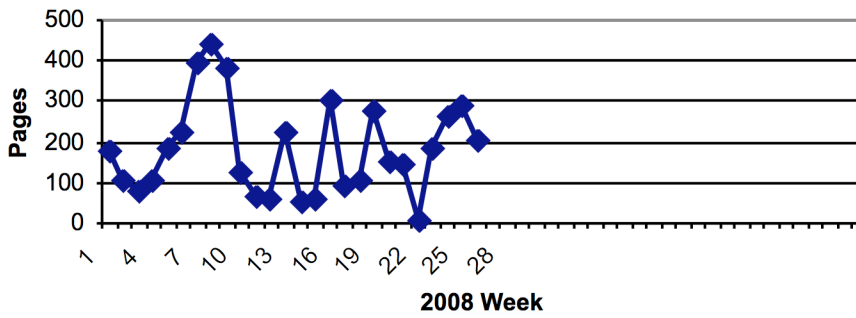
Note 2: In January 2008, the queue stats were adjusted to remove 2nd and 3rd generation MISSREFS (i.e., documents that reference other documents that are in MISSREF) from being included in RFC Editor time. There were some anomalies that needed to be worked out. Data post-Feb 2008 is more accurate.



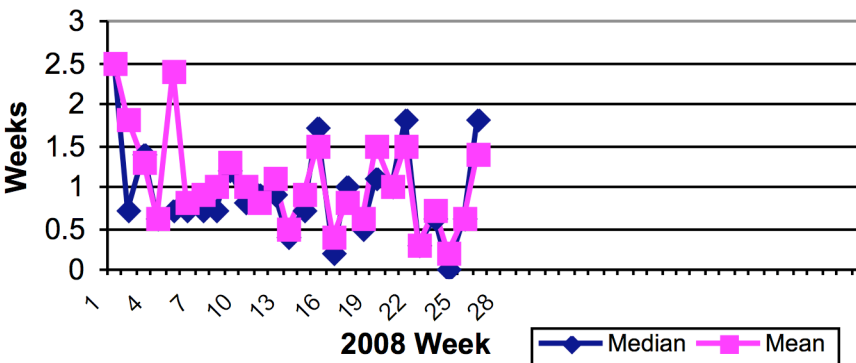
RFC-EDITOR State - Document Count



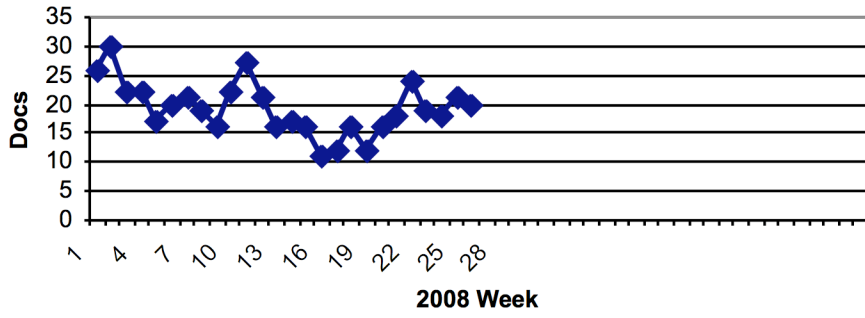
RFC-EDITOR State - Page Count



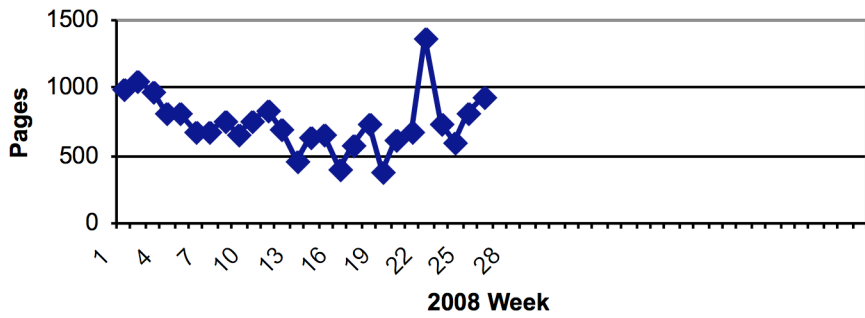
Time in RFC-EDITOR State, Mean & Median



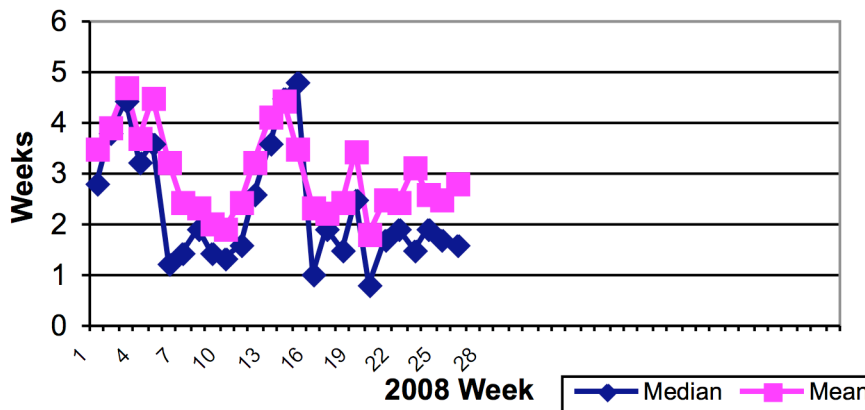
AUTH48 State - Document Count



AUTH48 State - Page Count



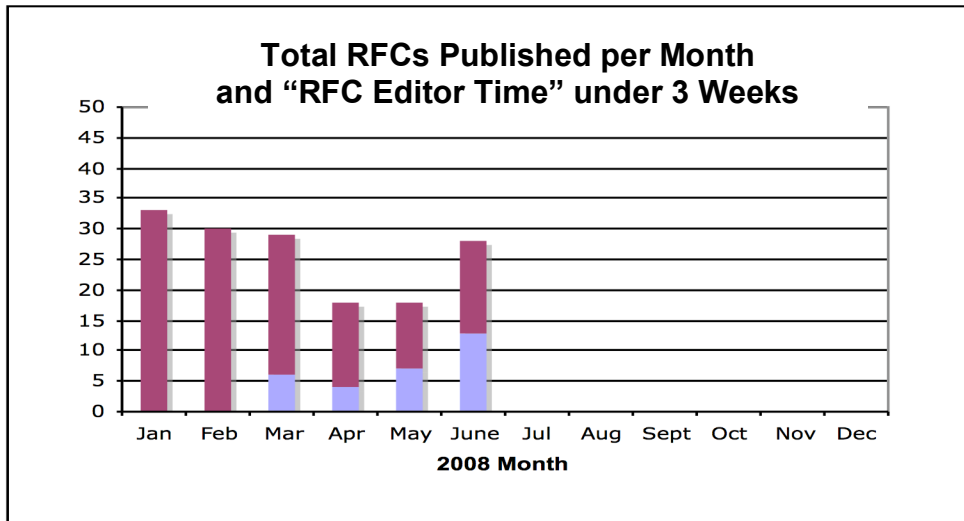
Time in AUTH48 State, Mean & Median



4. SLA Compliance Levels

The charts below show our compliance with the performance goals set in our SLA. Note that compliance as defined in our SLA requires that 90% of the documents published have an RFC Editor time (EDIT and RFC-EDITOR states) of less than 20 days.

This graph shows the total number of documents published per month, highlighting those that were published with an RFC Editor time of fewer than 20 days.



The following graph shows our percent compliance with the SLA (i.e., 90% of published RFCs will have an RFC Editor time of less than 20 days).

