

RFC Editor Report

IETF 92
Dallas, Texas

RFC Editor at IETF 92

Office Hours

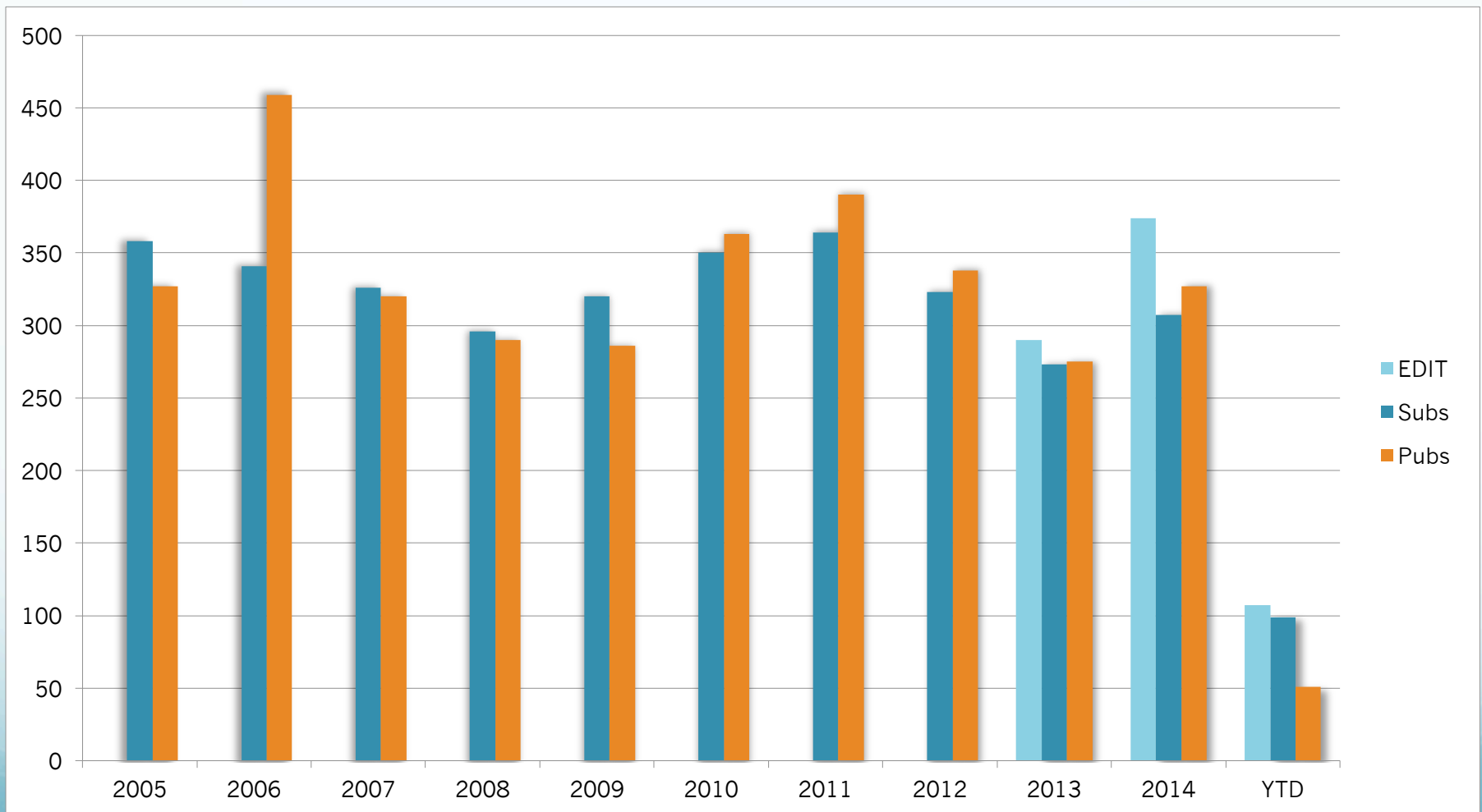
RPC: Mon – Thu (9:00 – 5:00)

RSE: Mon (1:00 – 3:30) & Wed (9:00 – 11)

ISE: Mon & Wed (9:00 – 11:30)

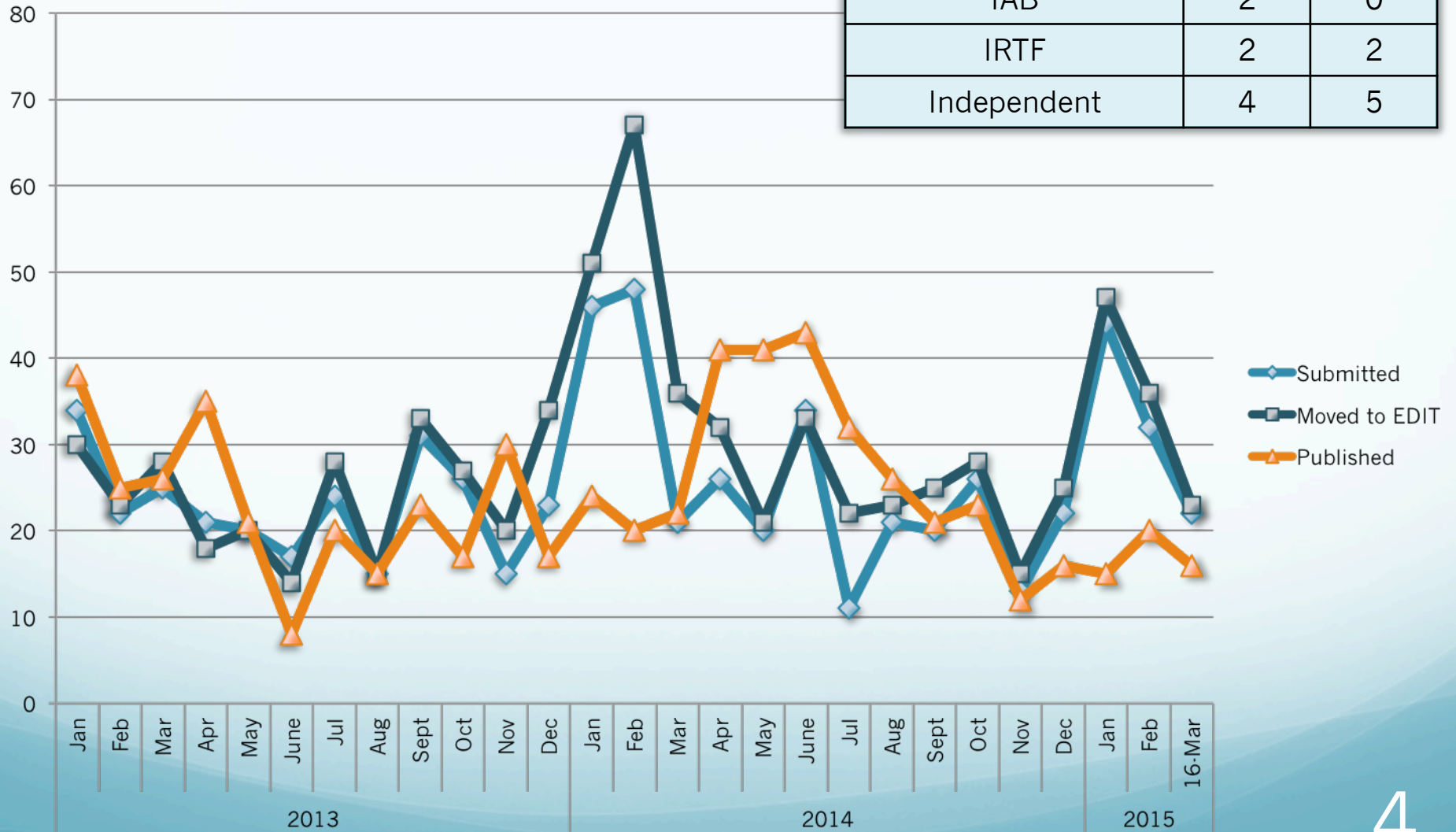
<http://www.rfc-editor.org/ietf.html>

Annual Subs & Pubs



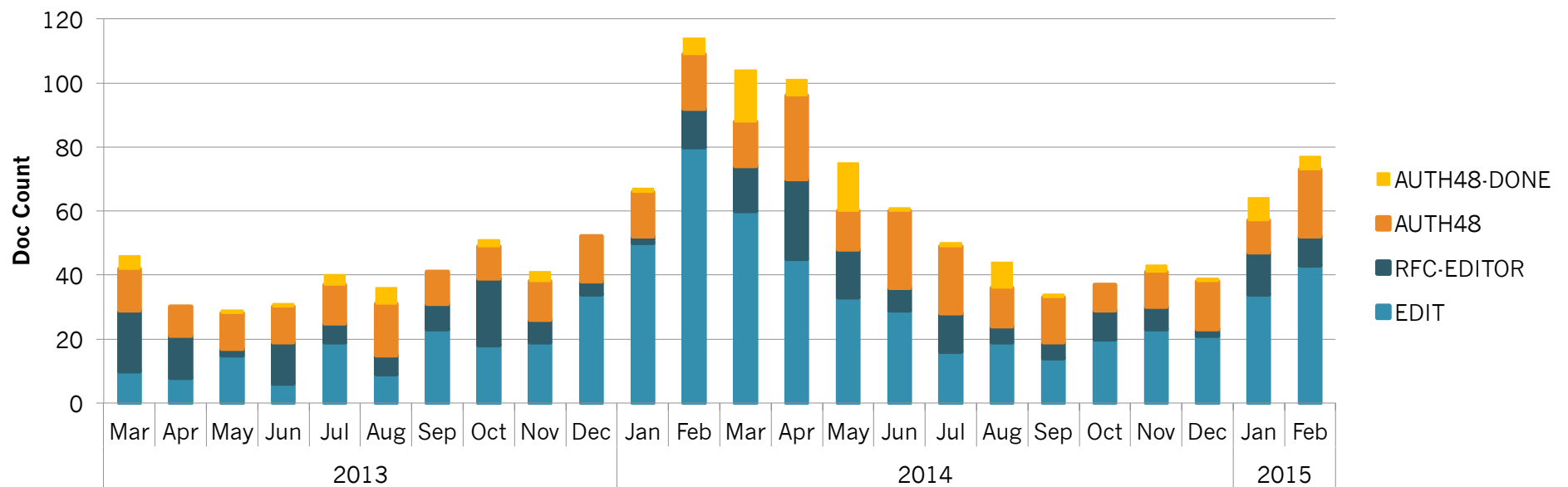
Monthly Queue

| Nov – Mar 16, 2015 | Subs | Pubs |
|--------------------|------|------|
| IETF WG | 113 | 65 |
| IETF non-wg | 12 | 7 |
| IAB | 2 | 0 |
| IRTF | 2 | 2 |
| Independent | 4 | 5 |



Queue Movement

of Docs in Primary Processing States

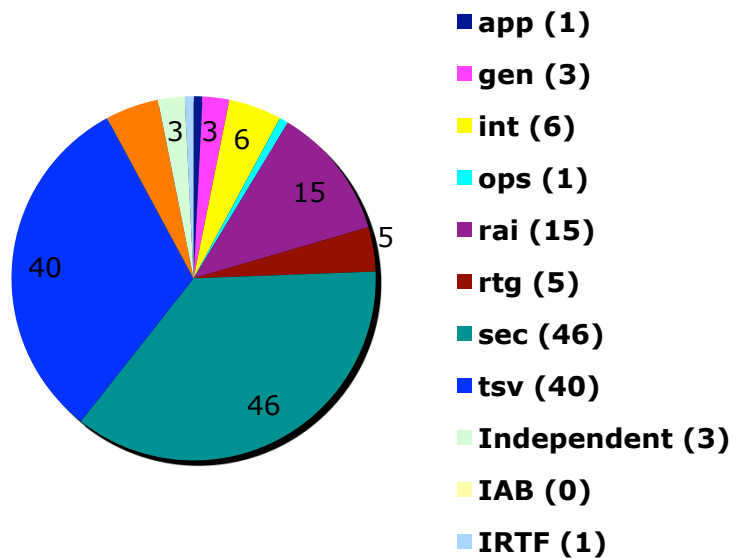


RPC Processing Times

| | 2014 | | | | | | | | | | 2015 | | 12mo Avg |
|---------------------------------------|------|-----|-----|-----|-----|-----|-----|-----|-----|-----|------|-----|------------|
| | Mar | Apr | May | Jun | Jul | Aug | Sep | Oct | Nov | Dec | Jan | Feb | |
| Met SLA Target (67% RET or better) | ✗ | ✗ | ✗ | ✗ | ✗ | ✓ | ✗ | ✓ | ✓ | ✓ | ✓ | ✗ | 42% |
| % of docs pub <= 6 wks | 36% | 17% | 5% | 2% | 46% | 77% | 52% | 74% | 92% | 69% | 73% | 60% | 50% |
| # of docs pub <=6 wks | 8 | 7 | 2 | 1 | 13 | 20 | 13 | 17 | 11 | 11 | 11 | 12 | 11 |
| total # of docs pub | 22 | 41 | 43 | 43 | 32 | 26 | 25 | 23 | 12 | 16 | 15 | 20 | 27 |
| total # of docs sub | 21 | 26 | 20 | 34 | 11 | 21 | 20 | 26 | 13 | 22 | 44 | 32 | 24 |
| total # of docs entering EDIT | 32 | 21 | 33 | 33 | 22 | 23 | 21 | 28 | 15 | 25 | 47 | 36 | 28 |
| 67th percentile (wks) | 7.1 | 9.7 | 10 | 11 | 8.2 | 5.9 | 7.4 | 5.8 | 5.2 | 6 | 5.9 | 6.3 | 7.4 |

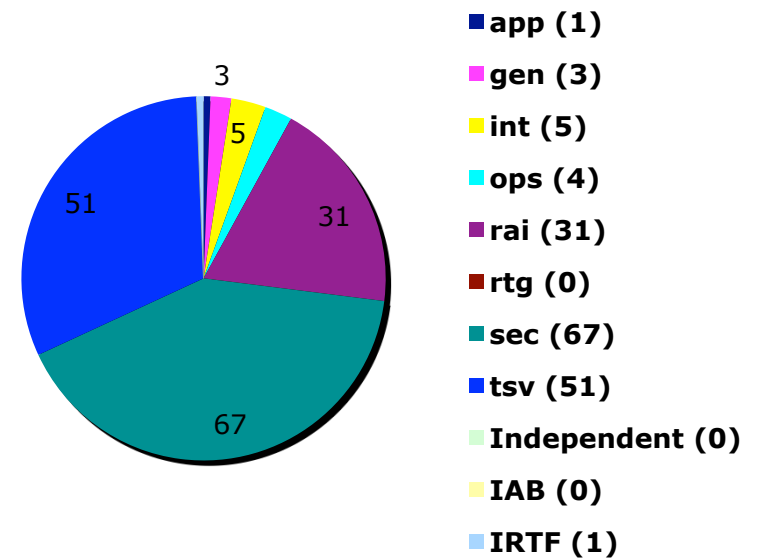
Reported Errata by Source of RFC

IETF 91



as of 2014-11-05

IETF 92



as of 2015-03-18

What's New

Reference libraries created as a result of the RFC Style Guide (RFC 7322)

- Reference entries for RFCs available in
 - TXT <<http://www.rfc-editor.org/in-notes/rfc-ref.txt>>
 - XML <<http://www.rfc-editor.org/refs/bibxml/>>
- Reference entries for STDs and BCPs in TXT
 - STD <<http://www.rfc-editor.org/in-notes/std-ref.txt>>
 - BCP <<http://www.rfc-editor.org/in-notes/bcp-ref.txt>>

RSE Update

Digital Object Identifiers (DOIs)

- DOIs to be assigned to all past and present RFCs by end of April 2015

Google Scholar

- RFC Editor has completed everything the Google Scholar engineers have requested; now waiting for the actual indexing

Writing Lab report

- Very positive feedback from the participants
- A significant work load on the RPC
- Considering the creation of a mailing list for English language usage questions, with volunteers from the community participating to help other authors

Format Update

- Most of the drafts are now “stable” (to be updated as we learn more through implementation)
 - See the Format FAQ for the current list of drafts associated with this project
 - <http://www.rfc-editor.org/rse/FormatFAQ.html>
- The community comment period for the SoWs closed; now waiting for the last drafts to finish before sending these out attached to an RFP